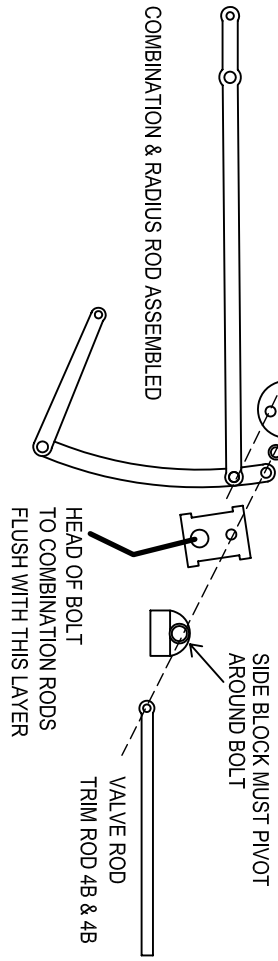


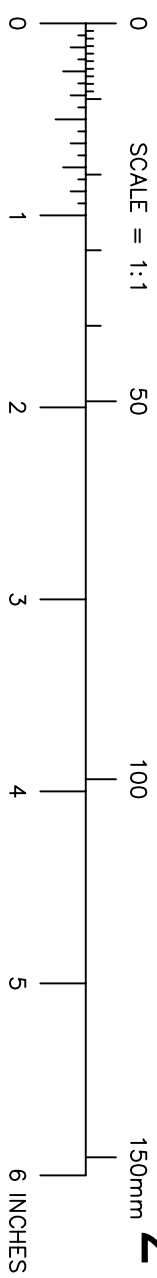
4x2mm BRASS RHS
WITH 2mm BRASS TUBE
SOLDERED ON TOP

PIVOTING SLIDE BLOCK
& VALVE ROD FIXED
THROUGH TOP BOLT ONLY
1mm THICK SPACR

SIDE BLOCK MUST PIVOT
AROUND BOLT



SCALE = 1:1



2-8-6T VALVE GEAR -1

